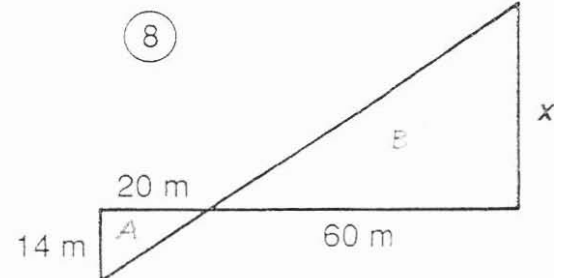
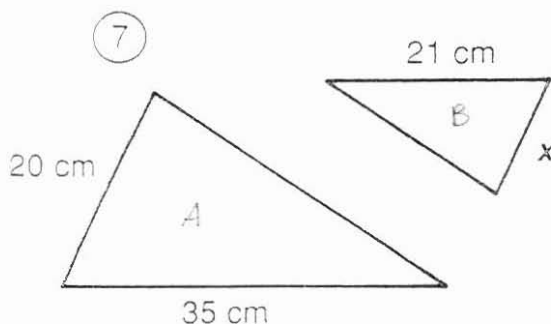
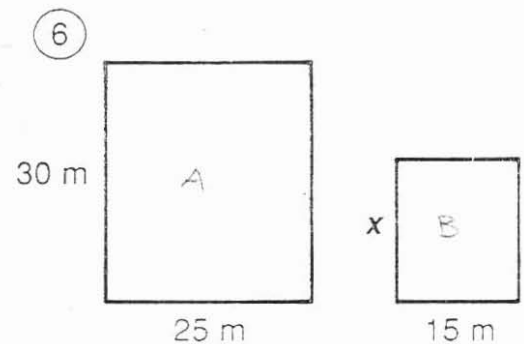
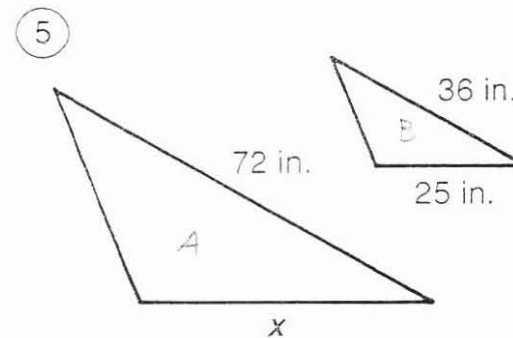
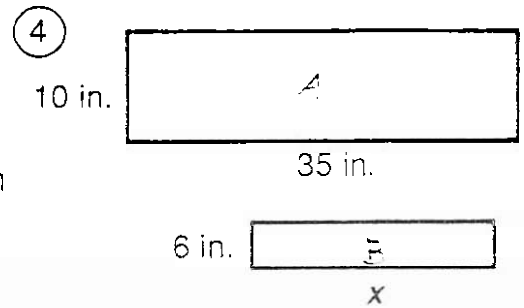
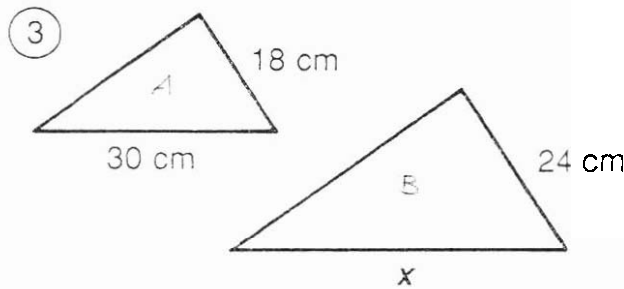
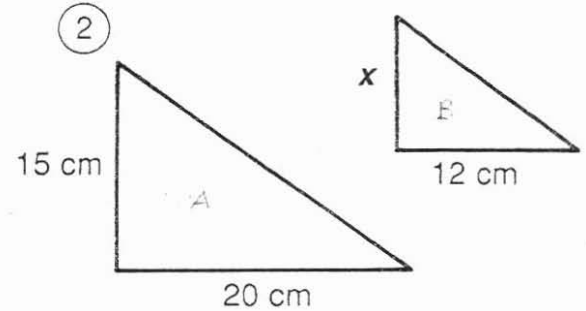
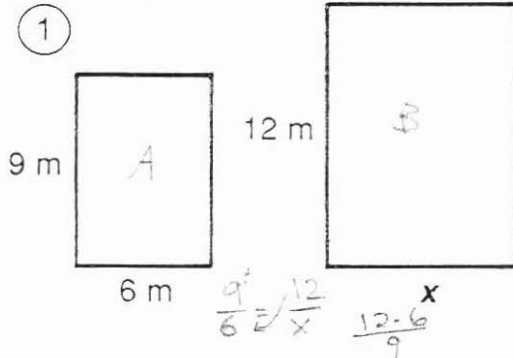


What Is a Termite's Favorite Breakfast?

For each pair of similar figures, find the length x . Cross out the letter next to your answer. When you finish, the answer to the title question will remain. You may use a calculator.

$$\frac{\text{Long side A}}{\text{Short side A}} = \frac{\text{Long side B}}{\text{Short side B}}$$

E	9 cm
L	14 cm
T	15 ft
A	20 m
G	50 in.
G	8 m
E	24 in.
S	12 cm
M	16 ft
K	46 m
D	21 in.
A	44 cm
C	10 cm
O	18 m
O	48 in.
F	40 cm
W	42 m



- 9 A flagpole casts a shadow 10 ft long. If a man 6 ft tall casts a shadow 4 ft long at the same time of day, how tall is the flagpole?

- 10 A photograph is 25 cm wide and 20 cm high. It must be reduced to fit a space that is 8 cm high. Find the width of the reduced photograph.